

# NOTICE TO MARINERS

## 29.03.2017

### DUDGEON OFFSHORE WIND FARM CONSTRUCTION WORKS

**NOTICE IS HEREBY GIVEN that construction activities are in progress at the Dudgeon Offshore Wind Farm.**

Wind turbine generators will be installed until Q3 2017. All construction work is planned to be completed late 2017.

#### **Service Operation Vessel**

The ESVAGT NJORD will be performing preparation support for the operation of the wind farm and will be in regular transit between the Dudgeon site and Great Yarmouth.

#### **Wind Turbine Generator Installation**

The SEA CHALLENGER will perform installation of the wind turbine generators (WTG) from January 2017 until Q3-2017. WTG installation and commissioning work will be performed at the following locations in March – April:

<b>Location</b>	<b>Easting</b>	<b>Northing</b>	<b>Lon DD</b>	<b>Lat DD</b>	<b>Depth LAT [m]</b>
Sub-Station	391 870	5 902 955	1,378776	53,264808	-21,1
L01	391 174	5 901 522	1,368835	53,251789	-21,0
L02	391 122	5 900 148	1,368526	53,239433	-19,9
L03	391 760	5 899 631	1,378257	53,234918	-20,2
L04	392 399	5 899 114	1,388002	53,230402	-21,0
L05	393 038	5 898 596	1,397745	53,225877	-20,6
K01	392 045	5 902 246	1,381639	53,258473	-21,5
K02	391 907	5 900 928	1,380019	53,246602	-21,2
K03	392 640	5 900 334	1,391200	53,241413	-20,8
K04	393 373	5 899 739	1,402378	53,236214	-21,0
K05	393 676	5 898 079	1,407470	53,221359	-21,8
T01	392 212	5 903 533	1,383706	53,270071	-21,5
T02	392 948	5 902 936	1,394938	53,264856	-22,1
T03	394 241	5 900 466	1,415137	53,242920	-21,8
T04	394 974	5 899 873	1,426312	53,237737	-22,3
T05	394 840	5 898 551	1,424742	53,225832	-21,2
J01	392 777	5 901 653	1,392808	53,253293	-23,1

Location	Easting	Northing	Lon DD	Lat DD	Depth LAT [m]
J02	393 509	5 901 060	1,403974	53,248112	-22,5
J03	394 107	5 899 145	1,413569	53,231024	-21,7
J04	394 315	5 897 562	1,417208	53,216841	-22,3
J05	394 954	5 897 045	1,426945	53,212322	-21,2
F01	392 353	5 904 837	1,385377	53,281817	-21,7
F02	393 254	5 905 526	1,398654	53,288190	-23,2
F03	392 649	5 906 016	1,389417	53,292470	-22,8
F04	392 044	5 906 506	1,380177	53,296750	-22,4
F05	391 439	5 906 996	1,370936	53,301030	-22,0
F06	390 834	5 907 486	1,361693	53,305308	-22,3
E01	391 477	5 904 129	1,372486	53,275276	-22,2
E02	391 619	5 905 431	1,374170	53,287004	-22,4
E03	390 886	5 906 025	1,362975	53,292191	-20,7
E04	390 153	5 906 619	1,351778	53,297377	-20,6
E05	390 229	5 907 976	1,352448	53,309586	-21,5
E06	389 624	5 908 466	1,343201	53,313863	-21,1

**COORDINATE REFERENCE SYSTEM:**

Datum: WGS84

Projection: UTM Zone 31N

**Accommodation Vessel**

The VESTLAND CYGNUS will be on location until Q4-2017 as accommodation vessel for Turbine commissioning.

**Commissioning activities**

For the commissioning and construction work there are several Crew Transfers Vessels operating in the wind farm area on a daily basis. This activity is ongoing and will continue until commissioning completes in Q4 2017.

**Rock Installation**

A rock installation campaign for scour protection of foundations will be ongoing in the period early May until mid-June. Vessel spread; Rock installation vessel Van Oord – HAM 602, a survey vessel, and 4 bulk carriers for rock supply.

The three intended anchor locations for the rock transfer from the bulk carriers are identified in the plot later in this notice.

## Guard Vessel

The RESOLUTE or the ADVENTURE will be present at the site to safe guard the wind farm area.

## **GENERAL**

**MARINERS ARE HEREBY INFORMED** that a statutory construction Safety Zone (exclusion zone) is in place at the wind farm site. This safety zone is defined by:

- A 500 metres radius around each wind turbine, offshore sub-station and their foundations whilst work is being performed as indicated by the presence of construction vessels; and
- A 50 metres radius around each wind turbine, the offshore sub-station platform and associated foundation structures installed, complete or incomplete but waiting to be commissioned as part of the Dudgeon offshore wind farm where personnel are present on, or are being landed on or being taken from the structures.

**All vessels will exhibit appropriate lights and shapes prescribed by the International Regulations for Preventing Collisions at Sea.**

**ALL VESSELS ARE REQUESTED** to give all construction and support vessels a wide berth.

**MARINERS ARE ADVISED** to navigate with caution and keep continued watch on VHF Ch. 16 when navigating the area.

A further notice to mariners will be issued when these works are completed, expected autumn 2017.

Please direct any enquiries regarding this notice to Statoil Wind Control Centre: [statoilwindcontrol@statoil.com](mailto:statoilwindcontrol@statoil.com)

A copy of this notice can also be found at:

<http://dudgeonoffshorewind.co.uk/news/notice-to-mariners>

## Fishing

**The Dudgeon Wind Farm area is closed to fishing.** The coordinates for the area of the closed area are included below.

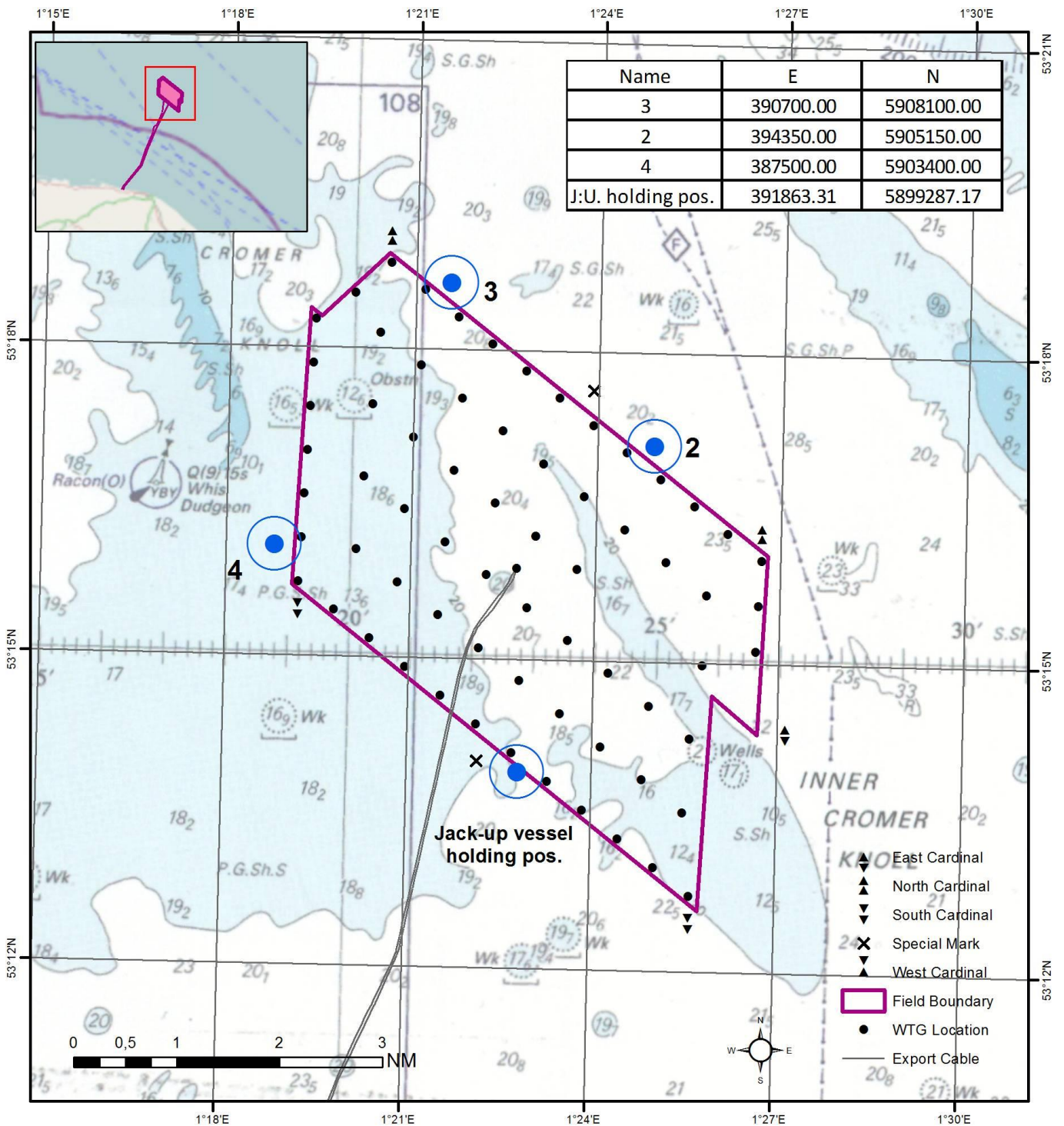


# WTG ID and locations (coordinates)

**WTG and Substation Locations**

WTG ID	Easting	Northing	Lon DD	Lat DD	Depth LAT
A01	380483.0	500066.0	1.38777	53.24347	-18.5
A02	388945.0	501153.0	1.34042	53.24869	-18.6
A03	388206.0	500700.0	1.33629	53.25282	-18.0
A04	388588.0	500218.0	1.32849	53.25702	-18.2
A05	387628.0	500278.0	1.31872	53.26201	-18.6
A06	391131.0	500470.0	1.32798	53.25685	-21.5
A07	390709.0	500711.0	1.34640	53.26170	-21.6
A08	388276.0	500338.0	1.33688	53.25784	-19.3
A09	388941.0	500431.0	1.32098	53.27017	-18.2
A10	387585.0	500323.0	1.32054	53.26910	-18.2
A11	380580.0	500434.0	1.350278	53.26910	-18.2
A12	388948.0	500427.0	1.34810	53.27404	-18.8
A13	388117.0	500462.0	1.321478	53.26328	-18.4
A14	388163.0	500599.0	1.322040	53.26382	-18.4
A15	388206.0	500676.0	1.322902	53.26747	-20.0
A16	390741.0	500476.0	1.341247	53.26747	-21.7
A17	390006.0	500523.0	1.350022	53.28570	-20.9
A18	388271.0	500520.0	1.338783	53.28091	-20.2
A19	388420.0	500713.0	1.340577	53.30262	-20.2
A20	388871.0	500793.0	1.333591	53.30891	-20.3
A21	388265.0	500746.0	1.323165	53.30466	-20.3
A22	391477.0	500412.0	1.324488	53.27527	-22.2
A23	391610.0	500431.0	1.324170	53.28704	-22.4
A24	390889.0	500025.0	1.329275	53.26218	-20.7
A25	390153.0	500818.0	1.351778	53.29737	-20.6
A26	390229.0	500791.0	1.324448	53.30686	-21.5
A27	388254.0	500466.0	1.343201	53.31383	-21.1
A28	392353.0	500467.0	1.368377	53.28187	-21.7
A29	392326.0	500526.0	1.368017	53.28160	-23.2
A30	392324.0	500609.0	1.380171	53.28750	-22.6
A31	381430.0	500898.0	1.370838	53.30103	-22.0
A32	380834.0	500749.0	1.361683	53.30508	-22.3
A33	388890.0	500560.0	1.407890	53.27928	-23.6
A34	394465.0	500460.0	1.417139	53.27928	-23.6
A35	388507.0	500460.0	1.403871	53.27103	-24.3
A36	388276.0	500257.0	1.444272	53.25603	-20.4
A37	388276.0	500257.0	1.444272	53.25603	-20.4
A38	388276.0	500257.0	1.444272	53.25603	-20.4
A39	388276.0	500257.0	1.444272	53.25603	-20.4
A40	388276.0	500257.0	1.444272	53.25603	-20.4
A41	388276.0	500257.0	1.444272	53.25603	-20.4
A42	388276.0	500257.0	1.444272	53.25603	-20.4
A43	388276.0	500257.0	1.444272	53.25603	-20.4
A44	388276.0	500257.0	1.444272	53.25603	-20.4
A45	388276.0	500257.0	1.444272	53.25603	-20.4
A46	388276.0	500257.0	1.444272	53.25603	-20.4
A47	388276.0	500257.0	1.444272	53.25603	-20.4
A48	388276.0	500257.0	1.444272	53.25603	-20.4
A49	388276.0	500257.0	1.444272	53.25603	-20.4
A50	388276.0	500257.0	1.444272	53.25603	-20.4
A51	388276.0	500257.0	1.444272	53.25603	-20.4
A52	388276.0	500257.0	1.444272	53.25603	-20.4
A53	388276.0	500257.0	1.444272	53.25603	-20.4
A54	388276.0	500257.0	1.444272	53.25603	-20.4
A55	388276.0	500257.0	1.444272	53.25603	-20.4
A56	388276.0	500257.0	1.444272	53.25603	-20.4
A57	388276.0	500257.0	1.444272	53.25603	-20.4
A58	388276.0	500257.0	1.444272	53.25603	-20.4
A59	388276.0	500257.0	1.444272	53.25603	-20.4
A60	388276.0	500257.0	1.444272	53.25603	-20.4
A61	388276.0	500257.0	1.444272	53.25603	-20.4
A62	388276.0	500257.0	1.444272	53.25603	-20.4
A63	388276.0	500257.0	1.444272	53.25603	-20.4
A64	388276.0	500257.0	1.444272	53.25603	-20.4
A65	388276.0	500257.0	1.444272	53.25603	-20.4
A66	388276.0	500257.0	1.444272	53.25603	-20.4
A67	388276.0	500257.0	1.444272	53.25603	-20.4
A68	388276.0	500257.0	1.444272	53.25603	-20.4
A69	388276.0	500257.0	1.444272	53.25603	-20.4
A70	388276.0	500257.0	1.444272	53.25603	-20.4
A71	388276.0	500257.0	1.444272	53.25603	-20.4
A72	388276.0	500257.0	1.444272	53.25603	-20.4
A73	388276.0	500257.0	1.444272	53.25603	-20.4
A74	388276.0	500257.0	1.444272	53.25603	-20.4
A75	388276.0	500257.0	1.444272	53.25603	-20.4
A76	388276.0	500257.0	1.444272	53.25603	-20.4
A77	388276.0	500257.0	1.444272	53.25603	-20.4
A78	388276.0	500257.0	1.444272	53.25603	-20.4
A79	388276.0	500257.0	1.444272	53.25603	-20.4
A80	388276.0	500257.0	1.444272	53.25603	-20.4
A81	388276.0	500257.0	1.444272	53.25603	-20.4
A82	388276.0	500257.0	1.444272	53.25603	-20.4
A83	388276.0	500257.0	1.444272	53.25603	-20.4
A84	388276.0	500257.0	1.444272	53.25603	-20.4
A85	388276.0	500257.0	1.444272	53.25603	-20.4
A86	388276.0	500257.0	1.444272	53.25603	-20.4
A87	388276.0	500257.0	1.444272	53.25603	-20.4
A88	388276.0	500257.0	1.444272	53.25603	-20.4
A89	388276.0	500257.0	1.444272	53.25603	-20.4
A90	388276.0	500257.0	1.444272	53.25603	-20.4
A91	388276.0	500257.0	1.444272	53.25603	-20.4
A92	388276.0	500257.0	1.444272	53.25603	-20.4
A93	388276.0	500257.0	1.444272	53.25603	-20.4
A94	388276.0	500257.0	1.444272	53.25603	-20.4
A95	388276.0	500257.0	1.444272	53.25603	-20.4
A96	388276.0	500257.0	1.444272	53.25603	-20.4
A97	388276.0	500257.0	1.444272	53.25603	-20.4
A98	388276.0	500257.0	1.444272	53.25603	-20.4
A99	388276.0	500257.0	1.444272	53.25603	-20.4
A100	388276.0	500257.0	1.444272	53.25603	-20.4
A101	388276.0	500257.0	1.444272	53.25603	-20.4
A102	388276.0	500257.0	1.444272	53.25603	-20.4
A103	388276.0	500257.0	1.444272	53.25603	-20.4
A104	388276.0	500257.0	1.444272	53.25603	-20.4
A105	388276.0	500257.0	1.444272	53.25603	-20.4
A106	388276.0	500257.0	1.444272	53.25603	-20.4
A107	388276.0	500257.0	1.444272	53.25603	-20.4
A108	388276.0	500257.0	1.444272	53.25603	-20.4
A109	388276.0	500257.0	1.444272	53.25603	-20.4
A110	388276.0	500257.0	1.444272	53.25603	-20.4
A111	388276.0	500257.0	1.444272	53.25603	-20.4
A112	388276.0	500257.0	1.444272	53.25603	-20.4
A113	388276.0	500257.0	1.444272	53.25603	-20.4
A114	388276.0	500257.0	1.444272	53.25603	-20.4
A115	388276.0	500257.0	1.444272	53.25603	-20.4
A116	388276.0	500257.0	1.444272	53.25603	-20.4
A117	388276.0	500257.0	1.444272	53.25603	-20.4
A118	388276.0	500257.0	1.444272	53.25603	-20.4
A119	388276.0	500257.0	1.444272	53.25603	-20.4
A120	388276.0	500257.0	1.444272	53.25603	-20.4
A121	388276.0	500257.0	1.444272	53.25603	-20.4
A122	388276.0	500257.0	1.444272	53.25603	-20.4
A123	388276.0	500257.0	1.444272	53.25603	-20.4
A124	388276.0	500257.0	1.444272	53.25603	-20.4
A125	388276.0	500257.0	1.444272	53.25603	-20.4
A126	388276.0	500257.0	1.444272	53.25603	-20.4
A127	388276.0	500257.0	1.444272	53.25603	-20.4
A128	388276.0	500257.0	1.444272	53.25603	-20.4
A129	388276.0	500257.0	1.444272	53.25603	-20.4
A130	388276.0	500257.0	1.444272	53.25603	-20.4
A131	388276.0	500257.0	1.444272	53.25603	-20.4
A132	388276.0	500257.0	1.444272	53.25603	-20.4
A133	388276.0	500257.0	1.444272	53.25603	-20.4
A134	388276.0	500257.0	1.444272	53.25603	-20.4
A135	388276.0	500257.0	1.444272	53.25603	-20.4
A136	388276.0	500257.0	1.444272	53.25603	-20.4
A137	388276.0	500257.0	1.444272	53.25603	-20.4
A138	388276.0	500257.0	1.444272	53.25603	-20.4
A139	388276.0	500257.0	1.444272	53.25603	-20.4
A140	388276.0	500257.0	1.444272	53.25603	-20.4
A141	388276.0	500257.0	1.444272	53.25603	-20.4
A142	388276.0	500257.0	1.444272	53.25603	-20.4
A143	388276.0	500257.0	1.444272	53.25603	-20.4
A144	388276.0	500257.0	1.444272	53.25603	-20.4
A145	388276.0	500257.0	1.444272	53.25603	-20.4
A146	388276.0	500257.0	1.444272	53.25603	-20.4
A147	388276.0	500257.0	1.444272	53.25603	-20.4
A148	388276.0	500257.0	1.444272	53.25603	-20.4
A149	388276.0	500257.0	1.444272	53.25603	-20.4
A150	388276.0	500257.0	1.444272	53.25603	-20.4
A151	388276.0	500257.0	1.444272	53.25603	-20.4
A152	388276.0	500257.0	1.444272	53.25603	-20.4
A153	388276.0	500257.0	1.444272	53.25603	-20.4
A154	388276.0	500257.0	1.444272	53.25603	-20.4
A155	388276.0	500257.0	1.444272	53.25603	-20.4
A156	388276.0	500257.0	1.444272	53.25603	-20.4
A157	388276.0	500257.0	1.444272	53.25603	-20.4
A158	388276.0	500257.0	1.444272	53.25603	-20.4
A159	388276.0	500257.0	1.444272	53.25603	-20.4
A160	388276.0	500257.0	1.444272	53.25603	-20.4
A161	388276.0	500257.0	1.444272	53.25603	-20.4
A162	388276.0	500257.0	1.444272	53.25603	-20.4
A163	388276.0	500257.0	1.444272	53.25603	-20.4
A164	388276.0	500257.0	1.444272	53.25603	-20.4
A165	388276.0	500257.0	1.444272	53.25603	-20.4
A166	388276.0	500257.0	1.444272	53.2	

## Rock Installation Campaign. Anchor locations for rock transfer



## KEY CONSTRUCTION VESSEL CONTACT DETAILS

### ESVAGT NJORD



**Call sign:** OWZN2

**Bridge Phone:** VSAT.TEL: +45 32 71 26 89; / GSM: +45 32 71 26 85

**E-mail:** njord@esvagtvesel.com

### SEA CHALLENGER



**Call sign:** OWLQ2

**Bridge Phone:** V-sat: +45 89 88 90 10

**Master phone:** vsat +45 89 88 90 11 / GSM +45 52 13 95 80

**E-mail:** seachallenger@a2sea.com / Master mast\_sc@a2sea.com

## VESTLAND CYGNUS



**Callsign:** C6BW7

**Bridge Phone:** VSAT.TEL: +4723677230; +4723677230 / GSM: +47 41 43 02 07

**E-mail :** [captain.cygnus@vestlandoffshore.no](mailto:captain.cygnus@vestlandoffshore.no) ; [bridge.cygnus@vestlandoffshore.no](mailto:bridge.cygnus@vestlandoffshore.no)

## Van Oord – HAM 602



**Callsign:** PENF

**Bridge Phone:** Hold

**E-mail:** Hold



## ADVENTURE



**Callsign:** 2IFE4

**Bridge Phone:** V-sat 01947750717

**E-mail:** [adventureGS@gmail.com](mailto:adventureGS@gmail.com) / [adventure.guard1@gmail.com](mailto:adventure.guard1@gmail.com)

## Resolute



**Callsign:** MLPD5

**Bridge Phone:** +44 284 179 8209

**E-mail:** [resolute.guard1@gmail.com](mailto:resolute.guard1@gmail.com)

**Advance WY77**



**Callsign:** MZNA6

**Bridge Phone:** Sat. Phone: 00870773231090/01947 240024

**E-mail:** [adventureGS@gmail.com](mailto:adventureGS@gmail.com)